



Solar Electric Power for Globalstar's Fixed Access Unit (FAU)

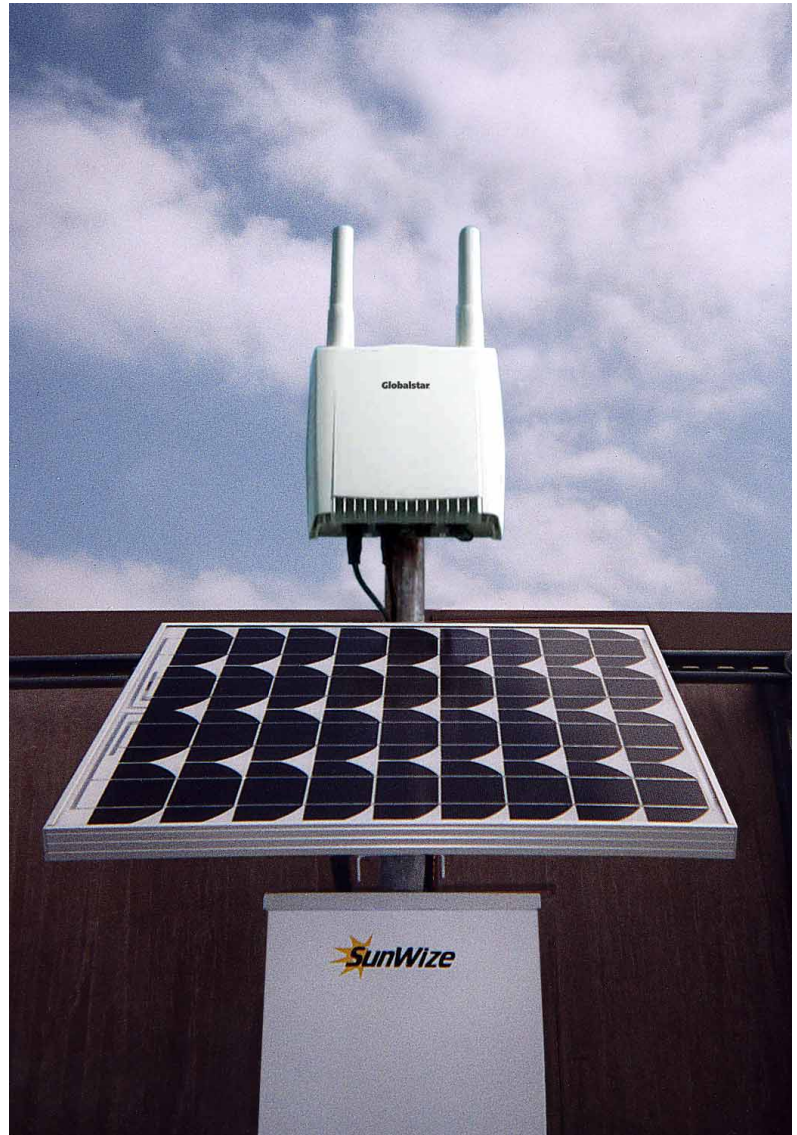
Solar Power Supplies for Remote Telephony

The Globalstar Fixed Access Unit (FAU) provides high quality telephone service virtually anywhere in the world. When integrated with a solar electric (photovoltaic) power supply, Globalstar's fixed satellite telephones offer a cost-effective solution for rural telephony in remote and isolated regions.

SunWize™ Power Ready Systems are complete pre-engineered solar power supplies. The systems have been tested and approved by Globalstar for use with the Globalstar FAU200 SAT Fixed Access Unit. A Power Ready System makes it possible to use the FAU in any location. They are available in a range of sizes to match your budget and desired talk time. Each system is pre-assembled and factory tested for quick, simple installation and features the latest technology in solar charging and maintenance-free battery storage.

Features

- Globalstar-approved for use with the FAU200 SAT
- Easy to assemble kit minimizes installation labor
- Dependable, automatic operation with low voltage load disconnect and system status indicators
- Temperature-compensated battery charging and weather resistant enclosure for use in any climate
- Sealed, maintenance-free battery provides a minimum of 3 days of reserve power



A SunWize Model GF Power Ready system is easily installed below the Globalstar Fixed Access Unit (FAU); like the FAU, the systems may be pole or wall-mounted, and must be installed with an unobstructed view of the sky.

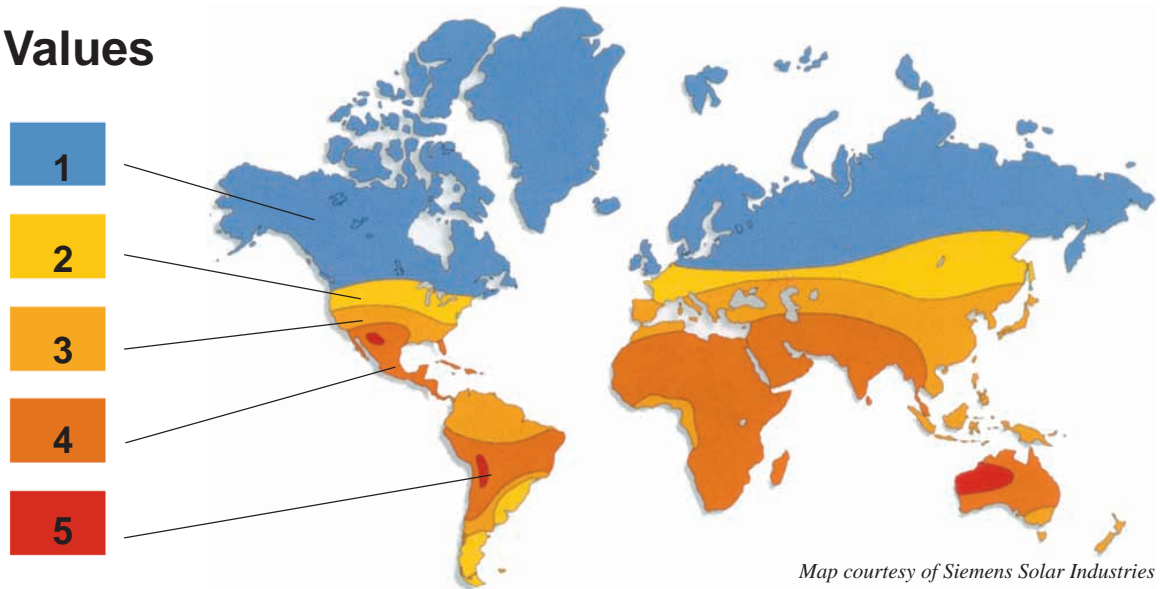
SunWize™ Power Ready Systems are manufactured by SunWize Technologies, Inc., a company specializing in the manufacture of integrated power systems. SunWize is also authorized by Globalstar to manufacture a solar charger for the mobile handsets. For more information on this charger visit our web site at www.sunwize.com/globalstar.html





Solar Electric Power for Globalstar's Fixed Access Unit (FAU)

Insolation Values



Map courtesy of Siemens Solar Industries

SunWize™ Power Ready Systems are available in a range of sizes to provide 48 VDC power for the Globalstar Fixed Access Unit. For proper selection, use the map and table to select the appropriate system for your location and the desired minimum daily talk time. This map divides the world into solar performance regions based on the daily average peak sun hours in

the worst case winter month, with the solar panel oriented toward the equator at an optimum tilt. (Use of this design value ensures that your system will be available for use year-round, even when solar conditions are not optimum). Of course, regional weather conditions and microclimates may significantly affect the amount of sunlight available and the performance of your system.

POWER READY SYSTEM MODEL NUMBER SELECTION INSTRUCTIONS:

Talk Time (hrs/day)	Insolation Values (min. peak sun hours/day)			
	2	3	4	5
1	GF-1I	GF-1G	GF-1F	GF-1E
2	GF-2I	GF-2G	GF-2F	GF-2E
4	GF-4I	GF-4H	GF-4G	GF-4E
6	GF-6J	GF-6H	GF-6G	GF-6F

1. Identify your location and "Insolation Value" (1–5 peak sun hours)
2. Select your desired "Talk Time" (1 - 6 hrs/day)
3. Determine the system model number (GF- ##)
 - a. Based on FAU200 SAT with no heater operation (avg. T > -20°C)
 - b. Systems designed for min 3 day battery autonomy and 99.95% system availability.
 - c. For average ambient temperature greater than -20° C but less than 0° C in worst case month, specify option "H" higher capacity battery.
 - d. For average ambient temperature less than -20°C in worst case month, contact SunWize for cold weather sizing chart.

POWER READY SYSTEM SHIPPING WEIGHTS

SYSTEM	Weight lbs. (kgs.)	SYSTEM	Weight lbs. (kgs.)
GF-1E	115 (52)	GF-4E	128 (58)
GF-1F	134 (61)	GF-4G	153 (70)
GF-1G	153 (70)	GF-4H	187 (85)
GF-1I	189 (86)	GF-4I	233 (106)
GF-2E	119 (54)	GF-6F	143 (65)
GF-2F	143 (65)	GF-6G	153 (70)
GF-2G	153 (70)	GF-6H	195 (88)
GF-2I	189 (86)	GF-6J	288 (131)

AVAILABLE OPTIONS

KEY	OPTION
- L	LCD display
- W	white powder-coated enclosure
- H	higher capacity battery for cold temperatures
- S	surge arrestor for lightning

SUNWIZE CORPORATE HEADQUARTERS:
 90 Boices Lane, Kingston, NY, USA 12401
 Tel: (914) 336-0146 • Fax: (914) 336-0457
 e-mail: globalstar@besicorp.com
www.sunwize.com/globalstar.html

SUNWIZE GLOBALSTAR HEADQUARTERS:
 810 Emerald Street, Suite 510
 San Diego, CA USA 92109
 Tel: (858) 490-5025 • Fax: (858) 490-5026

