



StarFax 100 User Manual



Congratulations on the purchase of your StarFax 100 Fax Interface. This product is designed for use with either of two Globalstar satellite phone products, the GSP-2900 Stationary Fixed Terminal, GSP-1600 Handheld Phone, or GSP-1620 Satellite Data Modem. The StarFax 100 requires certain programming dependant on the Globalstar satellite phone being used. This programming has been done for you by your Globalstar Authorized Dealer at the time of purchase. Should you need to change the programming of your StarFax 100, please contact your local Globalstar Authorized Dealer or Globalstar Customer Care at 1-877-452-5782. For a list of Globalstar Dealers, please visit www.globalstar.com .

StarFax 100
ON-Go Unit ID No. _____

Globalstar Authorized
Dealer Name _____

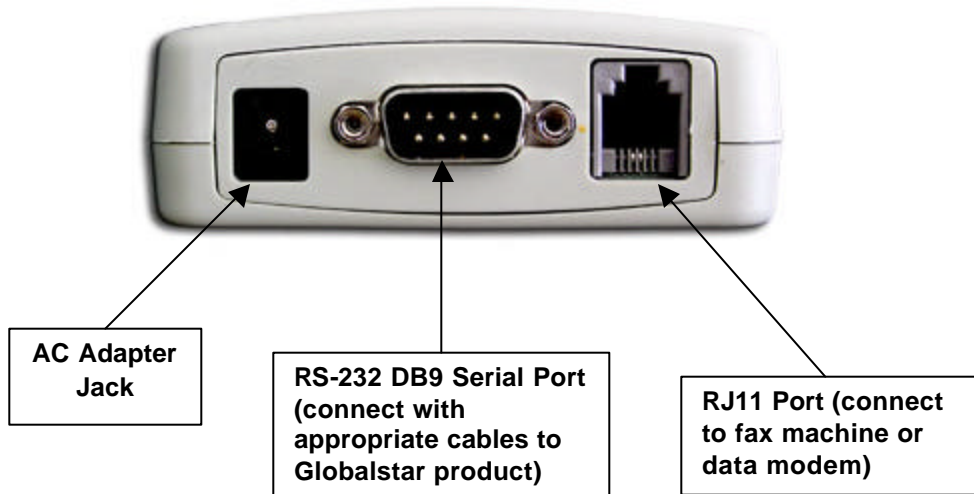
Date Purchased _____

Note: The information in this document applies to the StarFax 100 Interface product only. This product may also at times be referred to as the UCH-100.

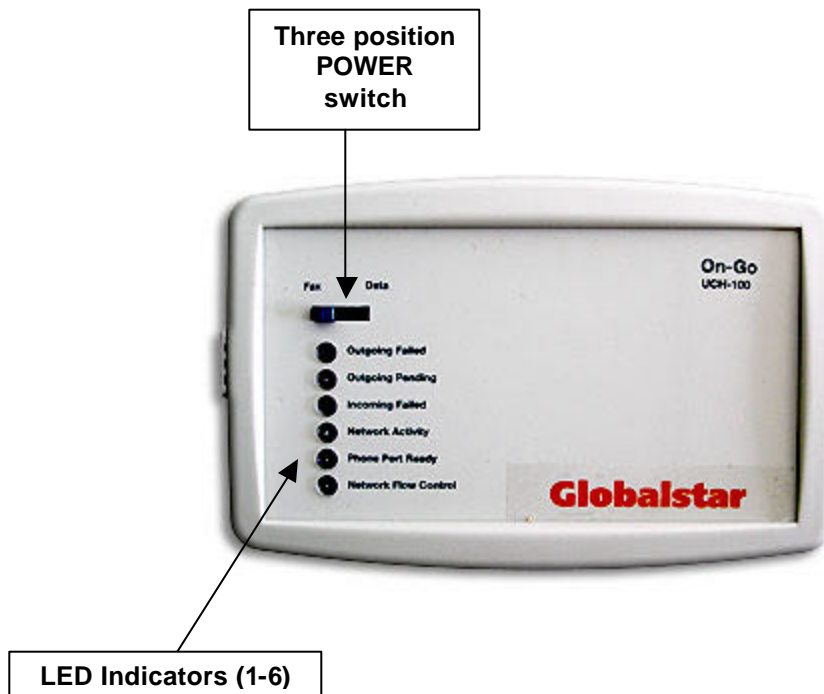
Copyright © Globalstar LLC., 2004.
GS-04-100 Reference Number: User Guide-SFX-100
01/13/05

StarFax-100 Interface

1. Front View



2. Top View



1 General Concept

The StarFax 100 comes with two ports, Serial (DB9) and Modem (RJ11). It provides a simple telephony interface to data/fax devices so that they can operate over the Globalstar digital network.

2 Configuration and Status

The functionality of the StarFax 100 is dictated by TWO settings, the SLIDE SWITCH setting and the DIP switch setting. The SLIDE switch setting position determines whether StarFax-100 will be operating in DATA or FAX mode; this switch can be accessed easily. The DIP switch is not exposed externally and should normally be set by the Service Provider only. The DIP switch position will dictate the personality of the StarFax 100.

2.1 LED indication

The StarFax 100 has 6 LEDs that indicate the operational status of the unit. The LED status lights indicate StarFax status, as follows:

| LED | Function | Off | Slow Blink | Fast Blink | On |
|-----|--------------------------------|--|-------------------------------------|---|---|
| 1 | Monitors Upstream link | Inactive | Requesting Upstream link | Connecting to Upstream link | Upstream link established successfully and connected |
| 2 | Monitors Phone Modem interface | Ready to place outgoing call on local PSTN | Placing outgoing call on local PSTN | Ready to send fax over upstream link | Accepting fax to be sent over upstream link |
| 3 | Monitors Serial interface | Configured for Serial Port use | | | Link is being flow controlled and transmission speed is automatically being regulated |
| 4 | Incoming Fax failed | Inactive | Incoming Fax failed | Not Applicable | Messages for locally attached device (fax) was not able to be delivered. Use the ##4 command to restart |
| 5 | Outgoing Pending | | Outgoing message pending | Outgoing message transferred but awaiting for acknowledgement | |
| 6 | Outgoing Failed | No failure, DC power | Outgoing Message Failed DC POWER | Outgoing Message Failed BATTERY POWER | No failure BATTERY |

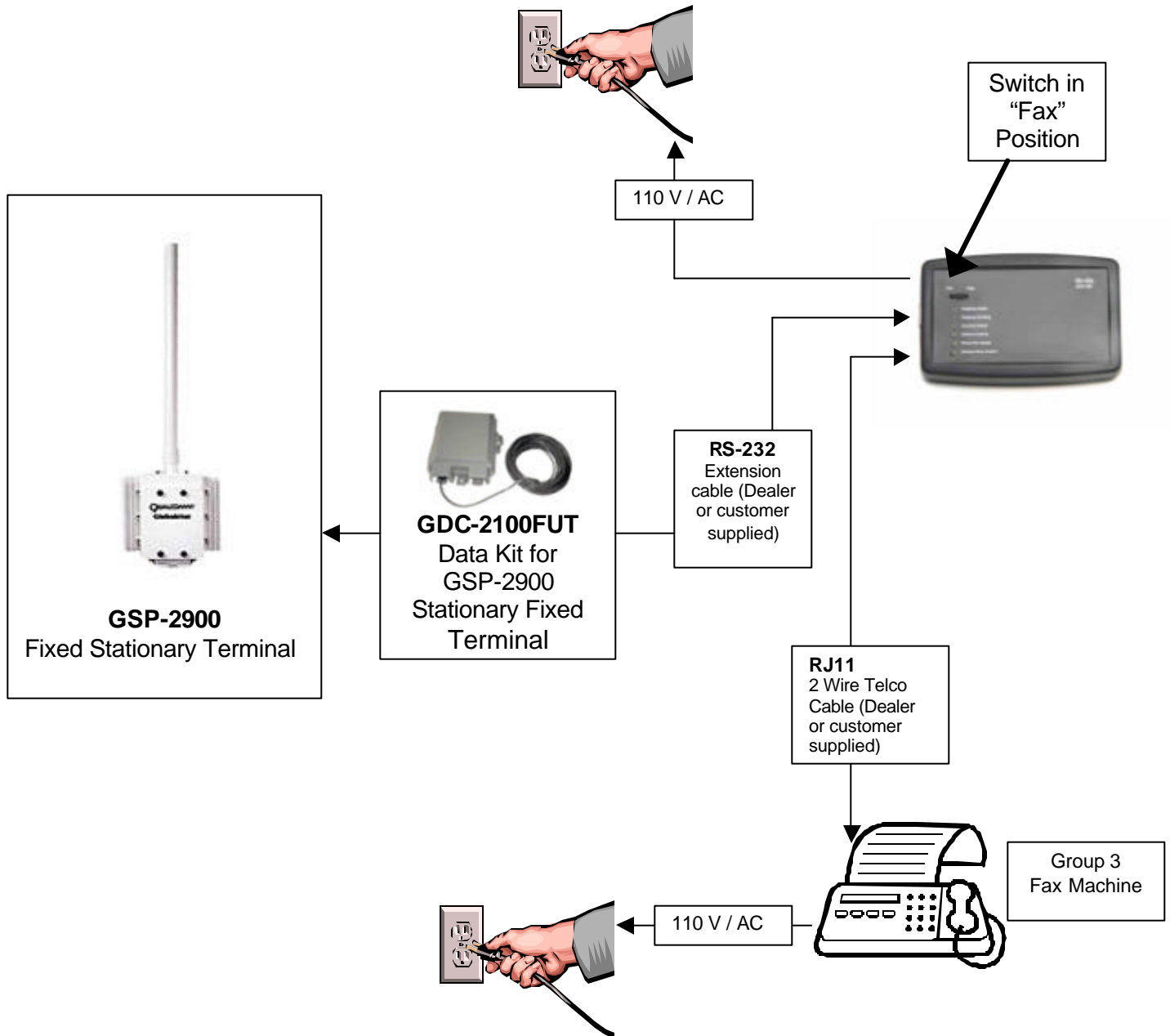
2.2 LOCAL commands

Although the StarFax 100 has no built-in keypad, the user can still command the StarFax 100 to perform certain tasks or to retrieve internal status and print certain reports. These commands are performed through a tone-based telephony device (such as a phone or fax machine). To enter a command, simply take the attached telephony device off hook, enter the key sequence and then hang up. Note that certain of the commands require a fax machine to be connected to the RJ11 port.

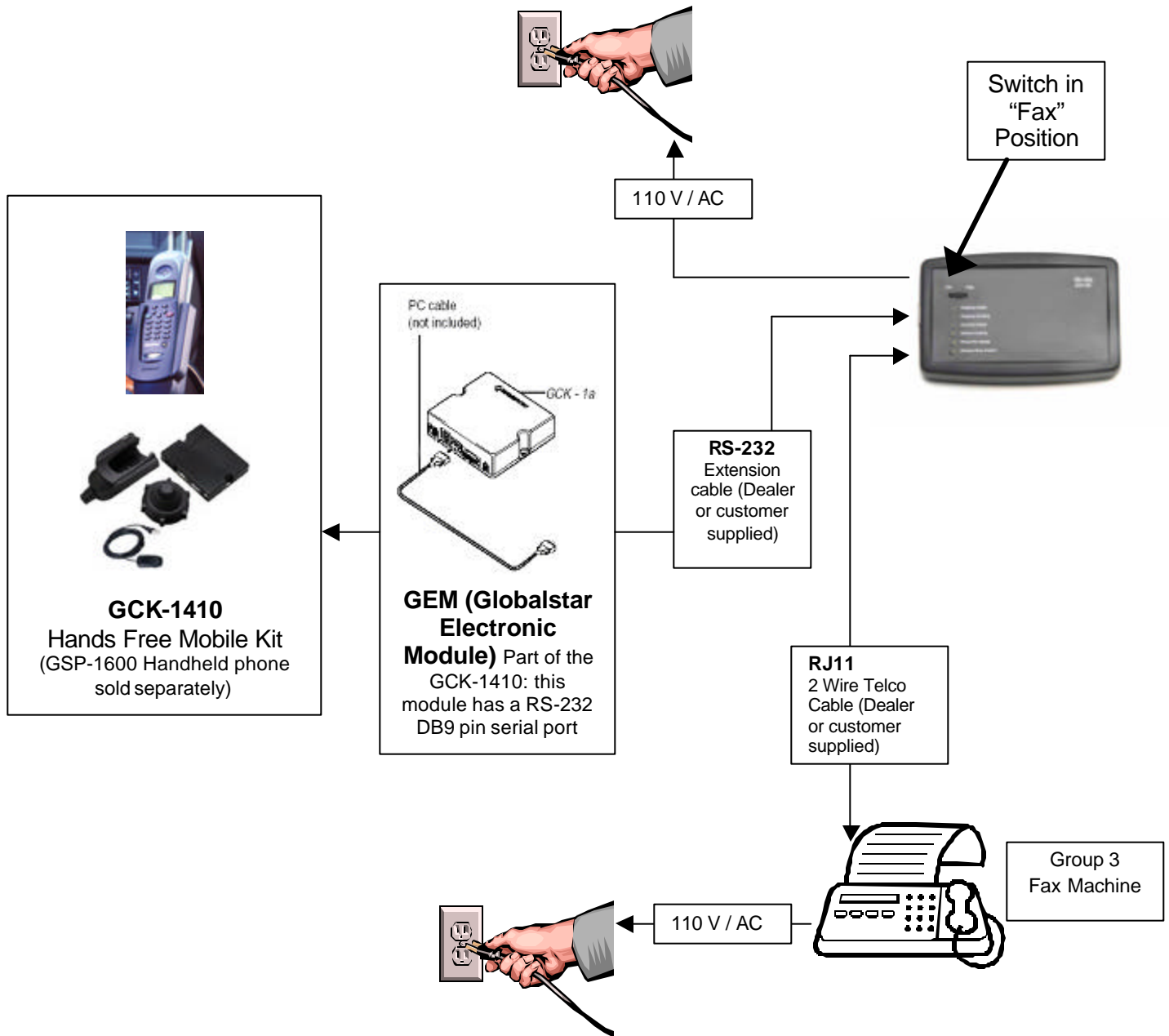
All the commands start with two “#” characters. The following table lists the supported commands. The only command the user needs to remember is “###”.

| KEY SEQUENCE | COMMAND |
|--------------|--|
| ##1 | Poll now command – requesting StarFax 100 to connect to On-Go server |
| ##2 | Connect command – requesting StarFax 100 to connect to the Internet |
| ##3 | Disconnect command – requesting StarFax 100 to disconnect from the Internet |
| ##4 | Retry incoming command – requesting StarFax 100 to retry printing incoming messages (need to have a fax machine attached to the RJ11 phone port) |
| ##5 | Reserved for future commands |
| ##6 | Print status command – requesting StarFax 100 to print internal status (need to have a fax machine attached to the RJ11 phone port) |
| ##7 | Show Status command – requesting StarFax 100 to print internal software version and DIP switch setting, mostly for diagnostic purpose (need to have a fax machine attached to the RJ11 phone port) |
| ##8 | Show Config command – requesting StarFax 100 to print internal configuration setting, mostly for diagnostic purpose (need to have a fax machine attached to the RJ11 phone port) |
| ##9 | Reserved for future commands |
| ##0 | Reserved for future commands |
| ##* | System Log command – requesting StarFax 100 to print system log, mostly for diagnostic purpose (need to have a fax machine attached to the RJ11 phone port) |
| ### | HELP command– requesting StarFax 100 to print a command help summary (need to have a fax machine attached to the RJ11 phone port) |

Connection When Using the StarFax 100 with a GSP-2900 Fixed Stationary Terminal



Connecting When Using the StarFax 100
with a GCK-1410 Hands Free Mobile Kit
and GSP-1600 Handheld phone



Connection When Using the StarFax 100

with a GSP-1600 Handheld Phone (Stand Alone)

