



StarFax-100  
Dealer Reference Guide

**IMPORTANT: For Globalstar Authorized Dealers ONLY  
DO NOT COPY OR DISTRIBUTE TO END USER  
CUSTOMERS (Contains DIP Switch Settings and  
Programming Information)**



**Congratulations on the purchase of your StarFax 100 Fax Interface. This product is designed for use with either of two Globalstar satellite phone products, the GSP-2900 Stationary Fixed Terminal, GSP-1600 Handheld Phone, or GSP-1620 Satellite Data Modem. The StarFax 100 requires certain programming dependant on the Globalstar satellite phone being used. This programming has been done for you by your Globalstar Authorized Dealer at the time of purchase. Should you need to change the programming of your StarFax 100, please contact your local Globalstar Authorized Dealer or Globalstar Customer Care at 1-877-452-5782. For a list of Globalstar Dealers, please visit [www.globalstar.com](http://www.globalstar.com) .**

StarFax 100  
ON-Go Unit ID No. \_\_\_\_\_

Globalstar Authorized  
Dealer Name \_\_\_\_\_

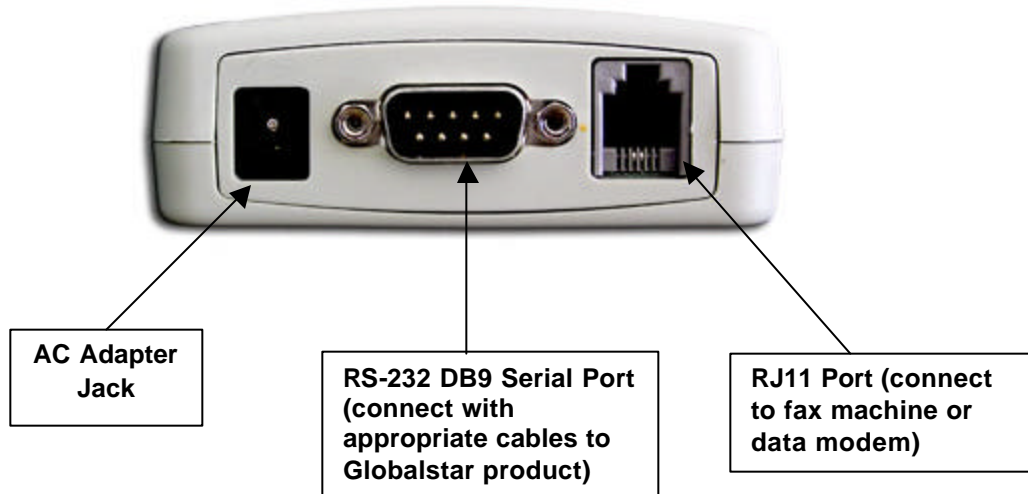
Date Purchased \_\_\_\_\_

**Note: The information in this document applies to the StarFax 100 Interface product only. This product may also at times be referred to as the UCH-100.**

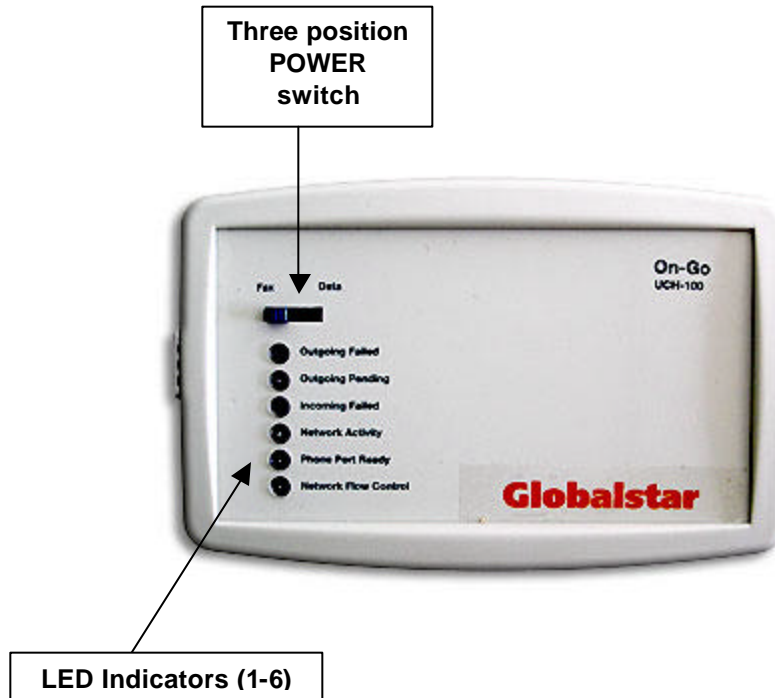
Copyright © Globalstar LLC., 2004.  
GS-04-100 Reference Number: User Guide-SFX-100  
01/14/05

## S StarFax-100 Interface

### 1. Front View



### 2. Top View



## 1 General Concept

The StarFAX-100 comes with two ports, Serial (DB9) and Modem (RJ11). It provides a simple telephony interface to data/fax devices so that they can operate over the Globalstar digital network.

Equipment such as fax machines, credit card terminals, security alarms, and data modems, all of which use an RJ11 interface, require a fixed line analog data telephony network with dial-tone capability. The StarFAX-100 offers the ability to utilize these devices in Globalstar where a fixed line analog data telephony network is not readily available.

## 2 Configuration and Status

The functionality of the StarFAX-100 is dictated by TWO settings, the SLIDE SWITCH setting and the DIP switch setting. The SLIDE switch setting position determines whether StarFAX-100 will be operating in DATA or FAX mode; this switch can be accessed easily. The DIP switch is not exposed externally and should normally be set by the Service Provider only. The DIP switch position will dictate the personality of the StarFAX-100.

### 2.1 LED indication

The StarFAX-100 has 6 LEDs that indicate the operational status of the unit. The LED status lights indicate StarFAX status, as follows:

LED	Function	Off	Slow Blink	Fast Blink	On
1	Monitors Upstream link	Inactive	Requesting Upstream link	Connecting to Upstream link	Upstream link established successfully and connected
2	Monitors Phone Modem interface	Ready to place outgoing call on local PSTN	Placing outgoing call on local PSTN	Ready to send fax over upstream link	Accepting fax to be sent over upstream link
3	Monitors Serial interface	Configured for Serial Port use			Link is being flow controlled and transmission speed is automatically being regulated
4	Incoming Fax failed	Inactive	Incoming Fax failed	Not Applicable	Messages for locally attached device (fax) was not able to be delivered. Use the Network-Queue command to restart
5	Outgoing Pending		Outgoing message pending	Outgoing message transferred but awaiting for acknowledgement	
6	Outgoing Failed	No failure, DC power	Outgoing Message Failed DC POWER	Outgoing Message Failed BATTERY POWER	No failure BATTERY

## 2.2 LOCAL commands

Although the StarFax-100 has no built-in keypad, the user can still command the StarFax-100 to perform certain tasks or to retrieve internal status and print certain reports. These commands are performed through a tone-based telephony device (such as a phone or fax machine). To enter a command, simply take the attached telephony device off hook, enter the key sequence and then hang up. Note that certain of the commands require a fax machine to be connected to the RJ11 port.

All the commands start with two “#” characters. The following table lists the supported commands. The only command the user needs to remember is “###”.

KEY SEQUENCE	COMMAND
##1	Poll now command – requesting StarFax-100 to connect to On-Go server
##2	Connect command – requesting StarFax-100 to connect to the Internet
##3	Disconnect command – requesting StarFax-100 to disconnect from the Internet
##4	Retry incoming command – requesting StarFax-100 to retry printing incoming messages (need to have a fax machine attached to the RJ11 phone port)
##5	Reserved for future commands
##6	Print status command – requesting StarFax-100 to print internal status (need to have a fax machine attached to the RJ11 phone port)
##7	Show Status command – requesting StarFax-100 to print internal software version and DIP switch setting, mostly for diagnostic purpose (need to have a fax machine attached to the RJ11 phone port)
##8	Show Config command – requesting StarFax-100 to print internal configuration setting, mostly for diagnostic purpose (need to have a fax machine attached to the RJ11 phone port)
##9	Reserved for future commands
##0	Reserved for future commands
##*	System Log command – requesting StarFax-100 to print system log, mostly for diagnostic purpose (need to have a fax machine attached to the RJ11 phone port)
###	HELP command– requesting StarFax-100 to print a command help summary (need to have a fax machine attached to the RJ11 phone port)

## 2.3 DIP SWITCH SETTINGS

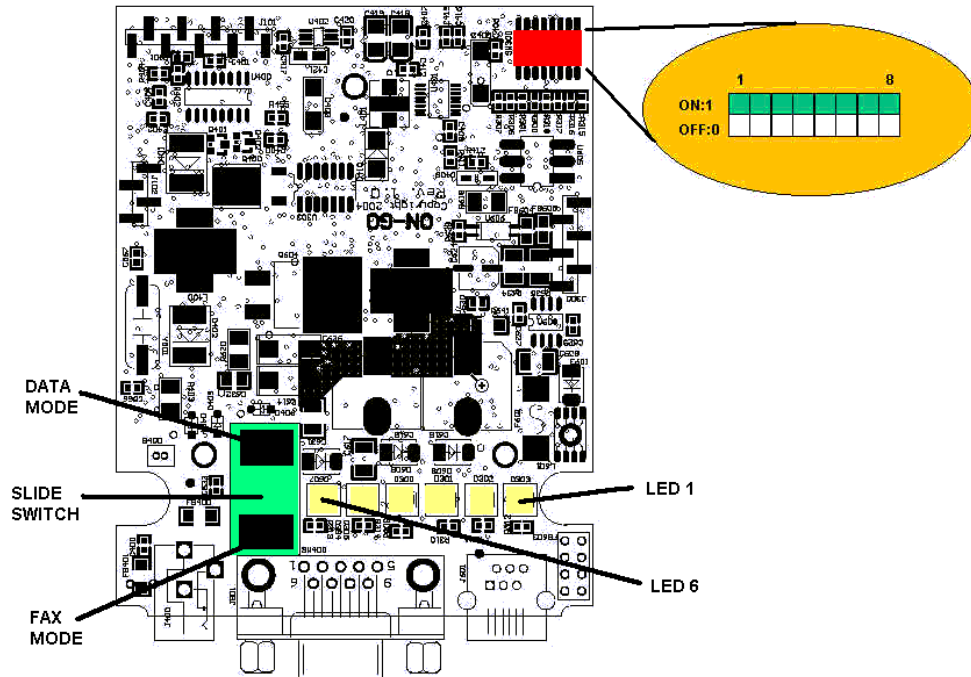
This product is designed for use with either of two Globalstar satellite phone products, the GSP-2900 Stationary Fixed Terminal or the GSP-1600 Handheld Phone. If the customer requires the unit to be re-configured for use with a different p, the dealer will have to open the cover of the unit to adjust the DIP Switch settings. Follow the DIP Switch Number setting for the appropriate unit in the following table.

**IMPORTANT: This unit is FRAGILE. Please take the necessary precautions below to ensure that you do not damage the unit’s components:**

- 1) **Do not over tighten the screws when replacing the cover.**
- 2) **Do not pinch any wires when replacing the cover.**
- 3) **Take all necessary Electrostatic Discharge (ESD) precautions – unit is comprised of static sensitive components.**

**Globalstar is not responsible for damages to the unit incurred during this process.**

DIP switches are located on the top of the board close to the battery compartment.



**FAX MODE:**

DIP Switch Number				Description
5	6	7	8	
OFF	OFF	OFF	OFF	Reserved
OFF	OFF	OFF	ON	Reserved
OFF	OFF	ON	OFF	GLOBALSTAR 1600
OFF	OFF	ON	ON	GLOBALSTAR fixed (GSP-2900, GSP-1900M)
OFF	ON	OFF	OFF	GSP-1600 Cellular
OFF	ON	OFF	ON	Reserved
OFF	ON	ON	OFF	Reserved
OFF	ON	ON	ON	Reserved
ON	OFF	OFF	OFF	Reserved
ON	OFF	OFF	ON	Reserved
ON	OFF	ON	OFF	Reserved
ON	OFF	ON	ON	Reserved
ON	ON	OFF	OFF	Reserved
ON	ON	OFF	ON	Reserved
ON	ON	ON	OFF	Reserved
ON	ON	ON	ON	Future

<u>DIP Switch Number</u>		<u>Description</u>
<u>4</u>		
OFF		No Printing
ON		Print Acknowledgement

<u>DIP Switch Number</u>		<u>Description</u>
<u>2</u>	<u>3</u>	
OFF	OFF	Dialtone length 7.5 s
OFF	ON	Dialtone length 1.5 s
ON	OFF	Dialtone length 12 s
ON	ON	Dialtone length 5 s

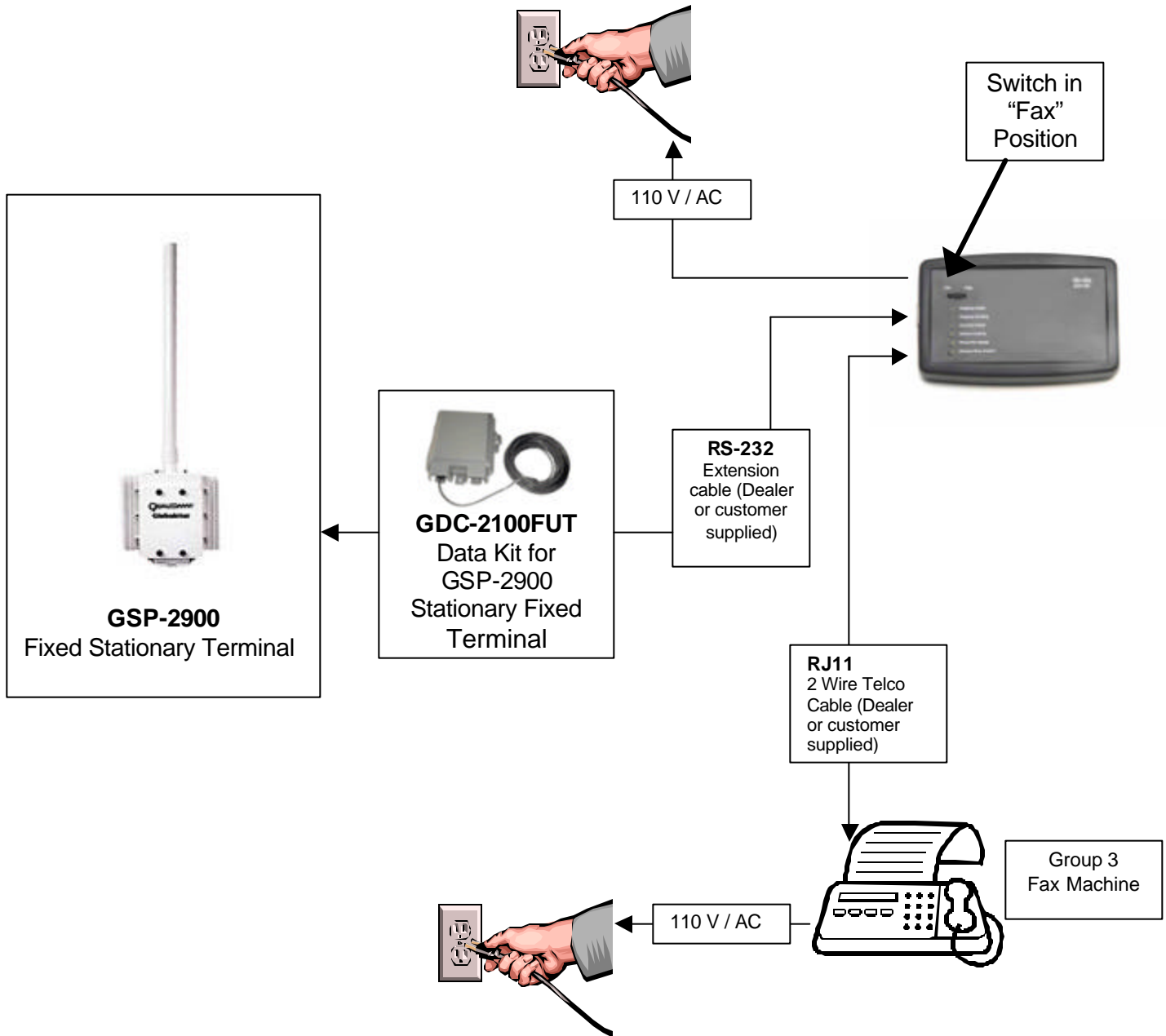
<u>DIP Switch Number</u>		<u>Description</u>
<u>1</u>		
ON		Bypass initial connect
OFF		Perform initial connect

**DATA MODE:**

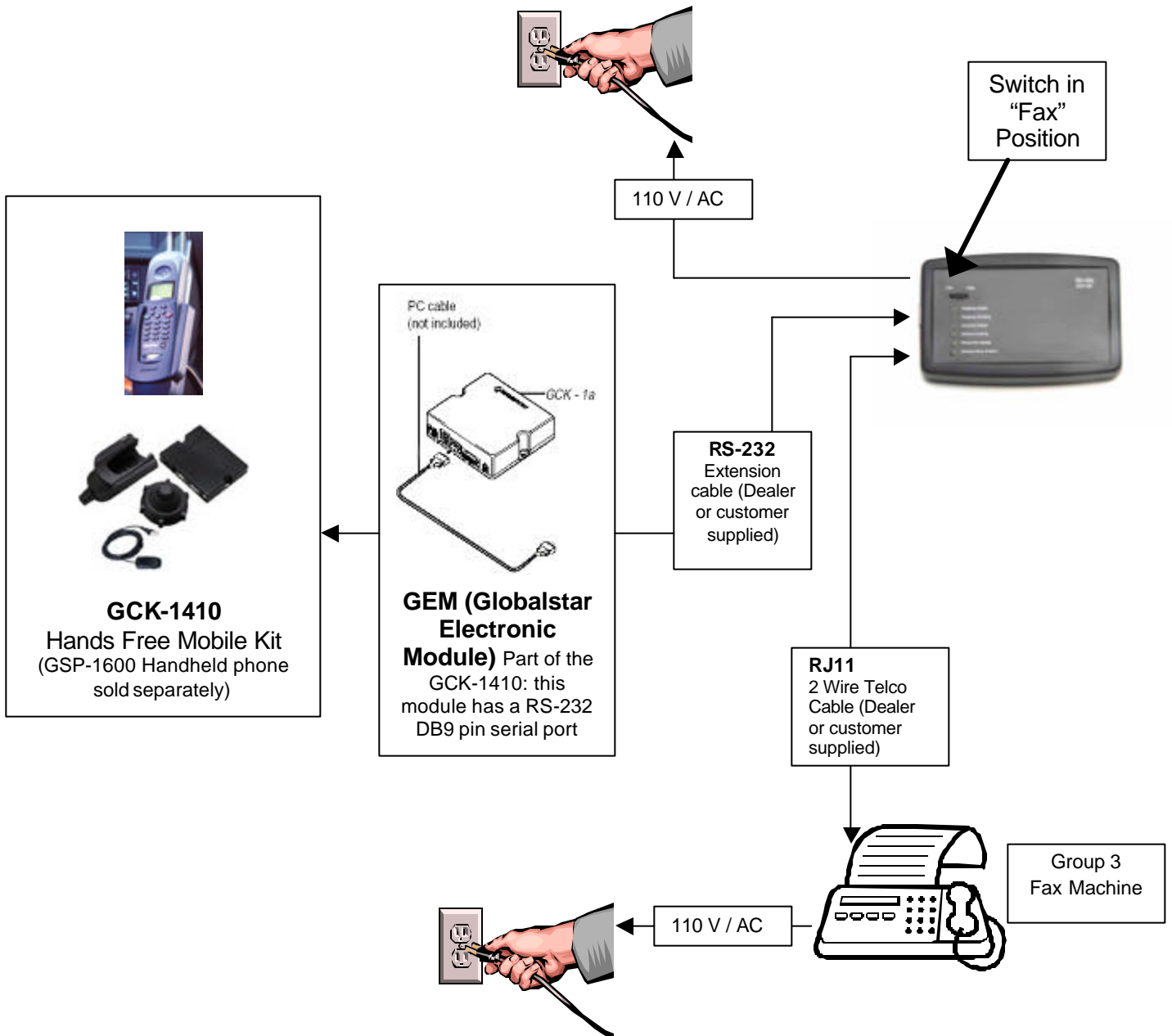
<u>DIP Switch Number</u>				<u>Description</u>
<u>5</u>	<u>6</u>	<u>7</u>	<u>8</u>	
OFF	OFF	OFF	OFF	GLOBALSTAR Circuit Data
OFF	OFF	OFF	ON	GLOBALSTAR Packet Data
OFF	OFF	ON	OFF	Reserved
OFF	OFF	ON	ON	Reserved
OFF	ON	OFF	OFF	Reserved
OFF	ON	OFF	ON	Reserved
OFF	ON	ON	OFF	Reserved
OFF	ON	ON	ON	Reserved
ON	OFF	OFF	OFF	
ON	OFF	OFF	ON	
ON	OFF	ON	OFF	
ON	OFF	ON	ON	
ON	ON	OFF	OFF	
ON	ON	OFF	ON	
ON	ON	ON	OFF	
ON	ON	ON	ON	

<u>DIP Switch Number</u>			<u>Description</u>
<u>2</u>	<u>3</u>	<u>4</u>	
OFF	OFF	OFF	Auto
OFF	OFF	ON	2400 bps
OFF	ON	OFF	4800 bps
OFF	ON	ON	9600 bps
ON	OFF	OFF	19200 bps
ON	OFF	ON	38400 bps
ON	ON	OFF	
ON	ON	ON	

**Connection When Using the StarFax 100**  
**with a GSP-2900 Fixed Stationary Terminal**



**Connection When Using the StarFax 100**  
**with a GCK-1410 Hands Free Mobile Kit**



**Connection When Using the StarFax 100**  
**with a GSP-1600 Handheld Phone (Stand Alone)**

